

แขกสำหรับเตา

พระบิดาพินิจ สมเด็จพระเจ้าฟ้าบรมโพธิ์สมยุมพันธ์

6

11

16

21

26

31

37

45

52

59

64

2

แขกสำหรับเตา
Bass in C

สามขึ้นตอน ๖

6

11

16

21

26

31

36

43

50

57

63

2

แพศสำหรับรายตา
Bass in C

ส่วนขึ้นตอน ๓



6



12



19



27



35



42



48



ส่วนขึ้นตอน ๔



6



11



16



20



ແທສຳຫຼາຍຕາ Bass in C

25

Measures 25-30: Bass line in C major, 4/4 time. Measures 25-30 contain rhythmic patterns primarily using eighth notes and quarter notes.

31

Measures 31-36: Bass line in C major, 4/4 time. Measures 31-36 contain rhythmic patterns. Measure 36 ends with a fermata and a '2' above the bar line, indicating a double bar line.

ສ່ວນທີໜຶ່ງ ໒

Measures 37-42: Bass line in C major, 4/4 time. Measures 37-42 contain rhythmic patterns. Measure 37 starts with a fermata and the label 'ສ່ວນທີໜຶ່ງ ໒'.

7

Measures 43-50: Bass line in C major, 4/4 time. Measures 43-50 contain rhythmic patterns.

13

Measures 51-58: Bass line in C major, 4/4 time. Measures 51-58 contain rhythmic patterns.

19

Measures 59-66: Bass line in C major, 4/4 time. Measures 59-66 contain rhythmic patterns.

25

Measures 67-74: Bass line in C major, 4/4 time. Measures 67-74 contain rhythmic patterns.

31

Measures 75-82: Bass line in C major, 4/4 time. Measures 75-82 contain rhythmic patterns. Measure 82 ends with a fermata and a '2' above the bar line, indicating a double bar line.

ສ່ວນທີໜຶ່ງ ໓

Measures 83-90: Bass line in C major, 4/4 time. Measures 83-90 contain rhythmic patterns. Measure 83 starts with a fermata and the label 'ສ່ວນທີໜຶ່ງ ໓'.

7

Measures 91-98: Bass line in C major, 4/4 time. Measures 91-98 contain rhythmic patterns.

11

Measures 99-106: Bass line in C major, 4/4 time. Measures 99-106 contain rhythmic patterns.

16

Measures 107-114: Bass line in C major, 4/4 time. Measures 107-114 contain rhythmic patterns.

23

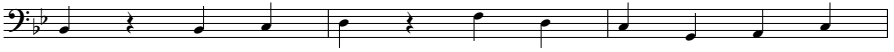
Measures 115-122: Bass line in C major, 4/4 time. Measures 115-122 contain rhythmic patterns. Measure 122 ends with a fermata.

ແທສຳຮ່າຍຕາ
Bass in C

ຂີ້ເຕີວອຸ ອ



6



9



ຂີ້ເຕີວອຸ ບ



6



9



ຂີ້ເຕີວອຸ ຄ



6



12



17



22

